

LAKE BOULEVARD

(BY REGISTERED PLAN 723, 20.117 WIDE)

KNOWN AS LAKESIDE DRIVE

PIN 58615-427(LT)

I REQUIRE THIS PLAN TO BE DEPOSITED UNDER THE LAND TITLES ACT.

DATE SEPTEMBER 13, 2011

J. C. STANTON
ONTARIO LAND SURVEYOR
CANADA LANDS SURVEYOR

PLAN 51R-38157

RECEIVED AND DEPOSITED

DATE OCT. 14, 2011

"S. MACDONALD"
REPRESENTATIVE FOR
LAND REGISTRAR FOR THE LAND
TITLES DIVISION OF SIMCOE '51'

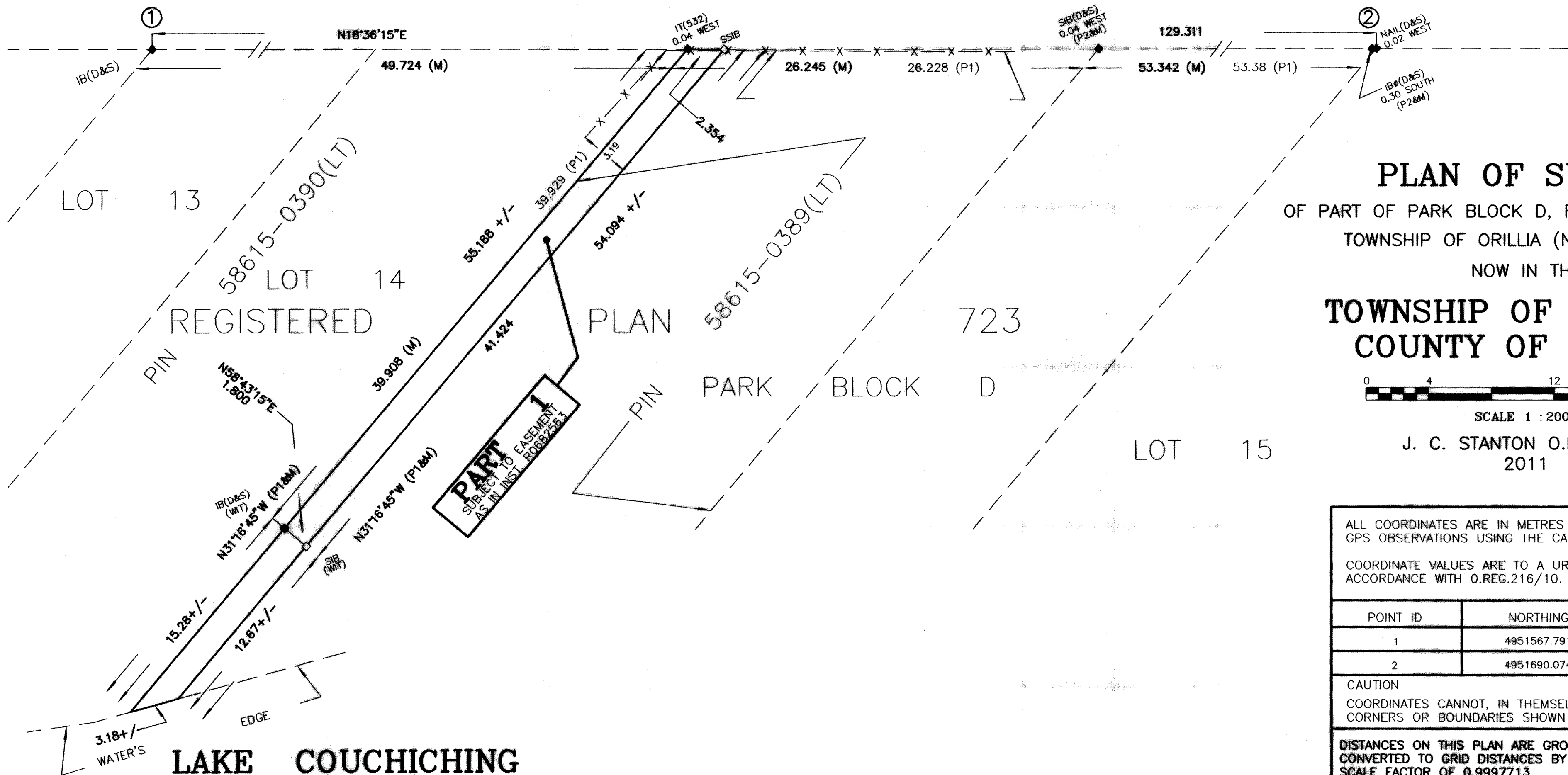
NOTE

DISTANCES AND COORDINATES SHOWN ON THIS PLAN ARE IN METRES AND CAN BE CONVERTED TO FEET BY DIVIDING BY 0.3048.

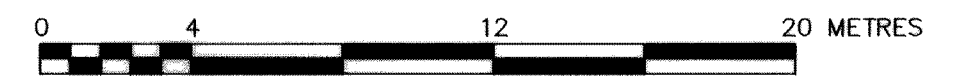
SCHEDULE OF PARTS

PART	LOT	PLAN	PIN	AREA
1	PART OF PARK BLOCK D	723	PART OF PIN 58615-0389(LT)	98.2 Sq.m.

PART 1, SUBJECT TO EASEMENT AS IN INST. R0682563



PLAN OF SURVEY
OF PART OF PARK BLOCK D, REGISTERED PLAN 723
TOWNSHIP OF ORILLIA (NORTH DIVISION)
NOW IN THE
TOWNSHIP OF SEVERN
COUNTY OF SIMCOE



SCALE 1 : 200

J. C. STANTON O.L.S., C.L.S.
2011

ALL COORDINATES ARE IN METRES AND WERE DERIVED FROM GPS OBSERVATIONS USING THE CAN-NET NETWORK.

COORDINATE VALUES ARE TO A URBAN ACCURACY IN ACCORDANCE WITH 0.REG.216/10.

POINT ID	NORTHING	EASTING
1	4951567.791	627918.703
2	4951690.074	627959.864

CAUTION
COORDINATES CANNOT, IN THEMSELVES, BE USED TO RE-ESTABLISH CORNERS OR BOUNDARIES SHOWN ON THE PLAN.

DISTANCES ON THIS PLAN ARE GROUND DISTANCES AND CAN BE CONVERTED TO GRID DISTANCES BY MULTIPLYING BY THE COMBINED SCALE FACTOR OF 0.9997713

NOTES:

BEARINGS ARE GRID, DERIVED FROM SIMULTANEOUS GPS OBSERVATIONS ON MONUMENTS 1 AND 2, SHOWN HEREON, HAVING A GRID BEARING OF N18°36'15"E, UTM ZONE 17, C.S.R.S. NAD 83.
FOR BEARING COMPARISONS, A ROTATION OF -1°16'45" WAS APPLIED TO CONVERT TO UTM BEARINGS.

LEGEND

- SIB - DENOTES STANDARD IRON BAR
- SSIB - DENOTES SHORT STANDARD IRON BAR
- IB - DENOTES IRON BAR
- IT - DENOTES IRON TUBE
- 532 - DENOTES CYRIL G. REUBEN O.L.S.
- D&S - DENOTES DEARDEN AND STANTON O.L.S.
- P1 - DENOTES D&S PLAN DATED SEPTEMBER 14, 1978
- P2 - DENOTES PLAN BY T. STAKAS O.L.S. DATED JULY 7, 2008
- WIT - DENOTES WITNESS
- M - DENOTES MEASURED
- - DENOTES MONUMENT FOUND
- - DENOTES MONUMENT PLANTED

SURVEYOR'S CERTIFICATE

I CERTIFY THAT:
1) THIS SURVEY AND PLAN ARE CORRECT AND IN ACCORDANCE WITH THE SURVEYS ACT AND THE REGULATIONS MADE UNDER THEM.
2) THE SURVEY WAS COMPLETED ON SEPTEMBER 12, 2011

ORILLIA ONTARIO
SEPTEMBER 13, 2011

J. C. STANTON
ONTARIO LAND SURVEYOR
CANADA LANDS SURVEYOR

DEARDEN AND STANTON LTD

ONTARIO LAND SURVEYORS
CANADA LANDS SURVEYORS
CONSULTING ENGINEERS

89 COLDWATER STREET E. L3V 1W8
PHONE (705)325-9521 FAX (705)325-0241

www.deardenandstanton.com

ORILLIA - ONTARIO

CAD FILE: PT25225

C-7594